



polyfabTM
Australia

THE SHADE CLOTH PEOPLE



Protecting
people*
just like you

www.polyfab.com.au



ARCHITEC 400®



COMSHADE®



POLYFX®



*Shade is one part of a comprehensive protection plan

Aiming high to reduce the risks

Australia and New Zealand are recognised as having the world's highest incidences of melanoma and skin cancer. This is why at Polyfab, we have been so passionate and determined in our endeavours to make and supply the world's best shadecloth for protecting people from the harmful UV rays of the sun.

We are continually developing our premium shadecloth for the protection of people, especially the young and the old, and selling it—initially throughout Australia and New Zealand but are now making it available through company sales offices and distributors around the world.

Polyfab has been in the protection business for over 20 years

As a wholly-owned Australian company we have been supplying Australia with the world's best quality shadecloth for two decades. In this time we have also established our own operations in the Middle East and in the USA as well as supplying our shadecloth to selected distributors all around the globe.

Polyfab has three ranges of shadecloth in its protection portfolio: PolyFX® is the lightest weight of these and is typically used for smaller, high quality shade sails and structures. This is often used in the residential market but is equally at home in commercial applications such as cafes and restaurants, schools and offices. The next range is Comshade®, the all-rounder of the group with applications ranging from home use for swimming pools and larger deck areas, through playground shade sails to the larger structures and shades seen over sporting grounds.

Topping off the range is Architec 400®, a heavyweight, 100% monofilament superior product used in large scale sports and commercial applications such as over car parks at shopping centres.

To help protect from the harmful UV rays that cause melanoma, nearly 85% of all the colours across our total range provide greater than 94% UVR block, which meets or exceeds the NSW Cancer Council's requirements for shade for children. It is important to recognize that not all shadecloth can provide this. UVR Block has become the most common standard for assessing the protection factor of shadecloth.

Polyfab continues to invest in R&D to further develop their products for the future. With the incidence of skin cancer increasing in all parts of the world, Polyfab's goal is to continue to provide the best protection it can for everyone.





Did you know that:



1

Australia has one of the highest levels of skin cancer in the world.

2

Every year over 1850 Australians will die from skin cancer. Compare this with approx. 1500 people who die on our nations roads.

3

Skin can burn in as little as 15 minutes in the summer sun so it is important to protect your skin from UV radiation.

4

At least 2 out of 3 Australians will develop skin cancer by the age of 70.

5

The more children are exposed to UV radiation the greater the risk of developing skin cancer later in life. Sun exposure, particularly during the first 15 years of life, has a significant contribution toward lifetime risk of developing skin cancer.

6

Providing sun protection at playgrounds can make a significant contribution to the prevention of skin cancer because children and parents use playgrounds throughout the year, particularly during the middle of the day when UVR levels are the most intense.

7

Shade cloth is often the most common and simplest way to provide sun protection.

8

As a general guide, shade cloth should provide at least 94% UV protection or greater.

9

Over 93% of the Polyfab Comshade shade cloth colour range provides 94% UV protection or greater.

Polyfab Colours

POLYFX®

COMSHADE®

ARCHITEC 400®



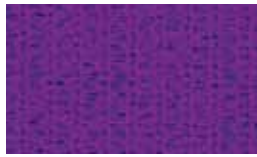
Orange



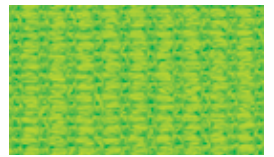
Berry



Lemon/Yellow



Grape



Lime



Porcelain



Cappuccino



Café Noir



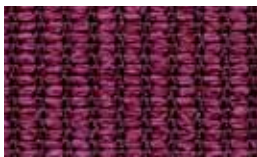
Sandstone



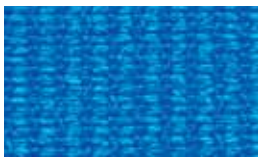
Rust



Copper



Merlot



Aquamarine



Navy Blue



Black



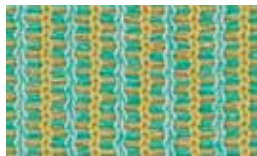
Slate



Blue Gum



Platinum



Light Green



Midnight Green



Colour Disclaimer: For technical reasons connected with colour reproduction, the colours shown may not be an exact representation of the actual product.



POLYFAB'S INTERNATIONAL DISTRIBUTION

Contact us for a distributor nearest you.



Polyfab Australia Pty Ltd ABN 54 069 432 846 | 63 Frankston Gardens Drive, Carrum Downs VIC 3201 Australia
Telephone 03-9770 8480 | Facsimile 03-9770 8483 | www.polyfab.com.au